

Dyna Locator

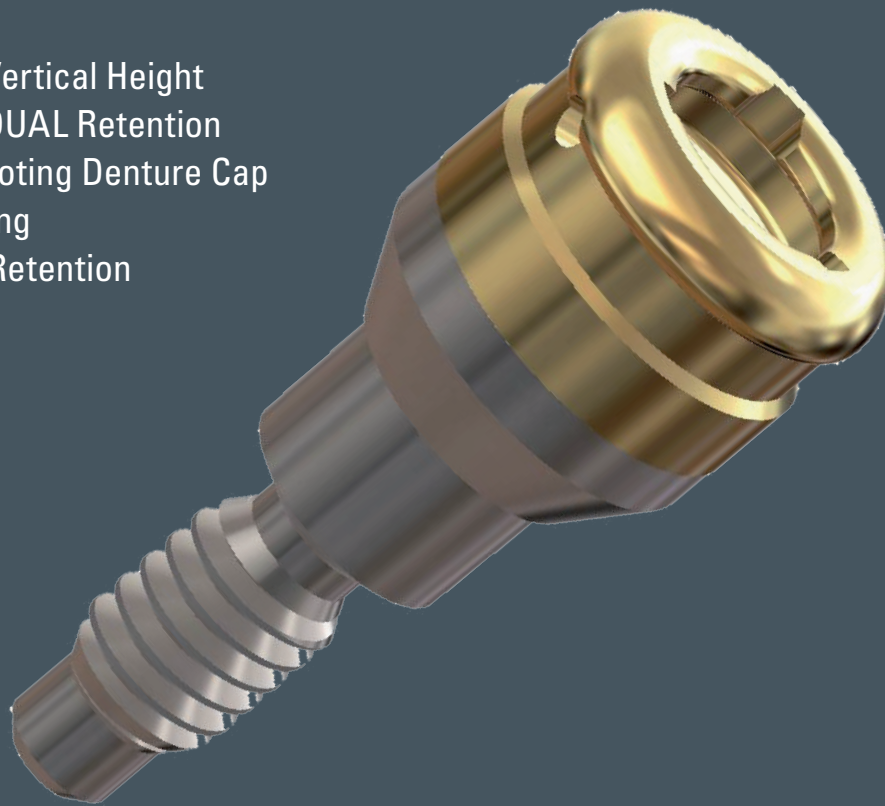
The Dyna[®] Locator[®] abutment octa is based on the Locator[®] system manufactured by Zest Inc. USA. The system exits out of a titanium Dyna extension abutment and a titanium Locator[®] abutment with TiN coating. As the connection to the implant is realized by the part manufactured by Dyna Dental Engineering BV itself, dental professionals are ensured of a perfect fit.

Because of the all-fit-all connection, the Dyna Locator[®] abutment octa fits on all Dyna Helix[®] and Dyna Octalock[®] implants. For extensive information regarding the use of the Locator[®] system, the Zest website can be consulted.

The Dyna Locator abutment octa will be delivered in one part, meaning that the extension abutment and the Locator abutment are fixed together with a torque of approximately 10 Ncm.

FEATURES:

- * LOWEST Vertical Height
- * Patented DUAL Retention
- * Unique Pivoting Denture Cap
- * Self-Aligning
- * Choice of Retention



your comfort is our goal!



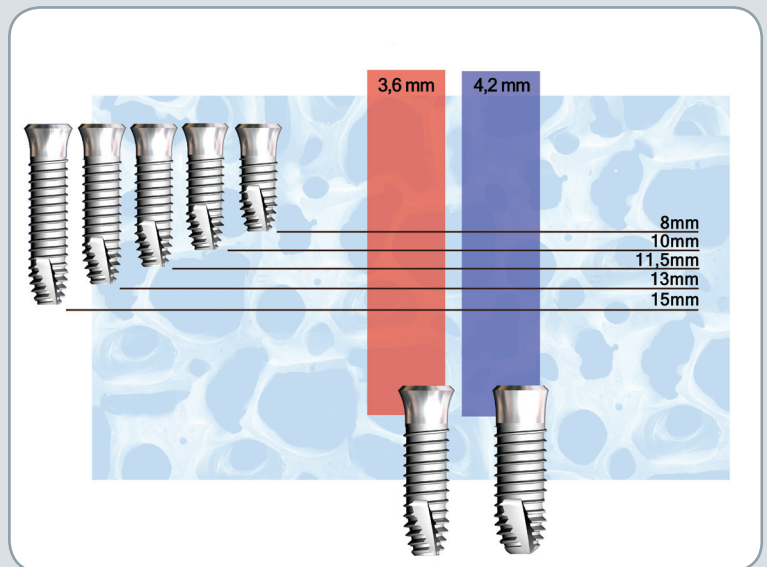
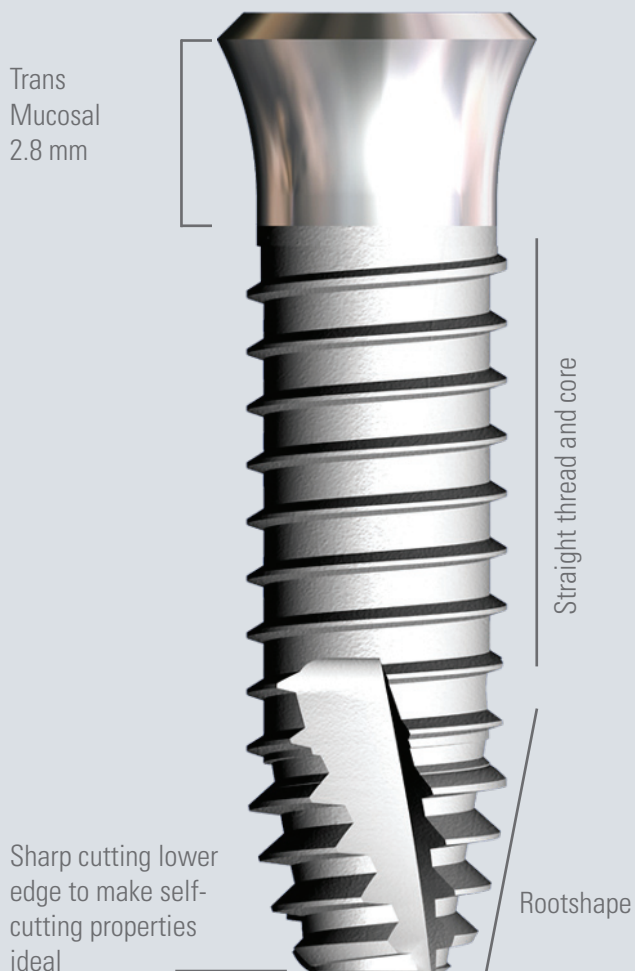
Dyna Helix[®] TM Implant

The Dyna Helix[®] TM implant is based on root form core with self tapping thread up to the bone level area of the implant. The rough subtractive ART surface creates an optimal micro morphological formation favoring fast bone apposition, whereas, smooth transmucosal part allows using one stage protocol. Because of the sharp self cutting lower edge of the implant the positioning in height during insertion is easier to manipulate. Pre tapping is necessary when, especially in the cortical bone, there exists the risk of overheating or creating too much stress in the surrounding bone. The lower part of the treads are designed more horizontally. Because of this design the axial forces are transferred more vertically to the alveolar bone.

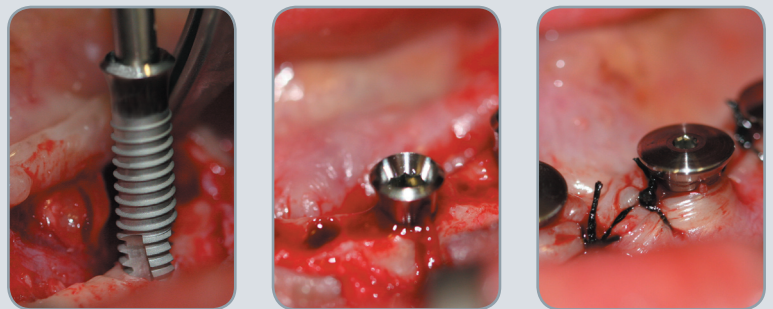
The use of several implant diameters and all-fit abutments gives an ideal combination of simplicity and reliability.

Current concept of Dyna Helix[®] TM implant is based on solid, straight screw cylinder with a 2µm polished collar (2.8mm) extending through the soft tissue. The basic design of the Dyna Helix[®] TM implant corresponds to that of the Dyna Helix[®] ST implant. The absence of the compression zone at the upper part of the implant facilitates surgery for type 1 or 2 bone (as defined by Lekholm and Zarb).

Every implant is supplied together with a 1mm cover screw (84TM1) in a sterile, double peel-pouch type packaging that assures a five year shelf life. Other cover screws for the Dyna Helix[®] TM implants are available in three different heights 0, 2 and 3mm. The implant length mentioned (also on the packaging) is the part until the polished collar, so the ART treated part. The collar is 2.8mm



Dyna Helix[®] TM implants are available in diameters 3.6 and 4.2mm and lengths 8, 10, 11.5, 13 and 15mm.



Dyna Dental Engineering BV

PO Box 70
4600 AB Bergen op Zoom
The Netherlands

T. +31(0)164-258980
F. +31(0)164-258390
E. dyna@dynadental.com

Ask your local dealer for more information



3202-12-02

www.dynadental.com

Special thanks to Dr. Gonçalvez/ Dr. Franken/ Dr. Plooy

design: van der Plas & Lemmens BNO